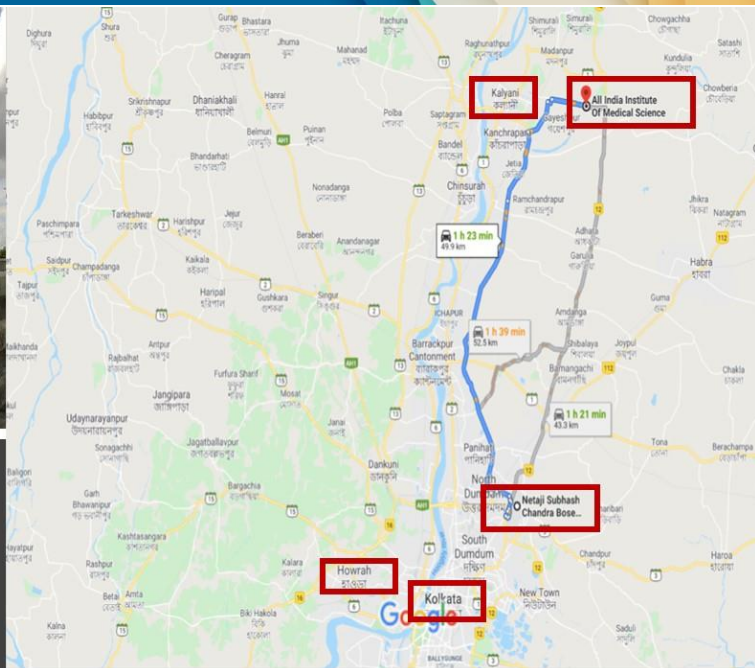
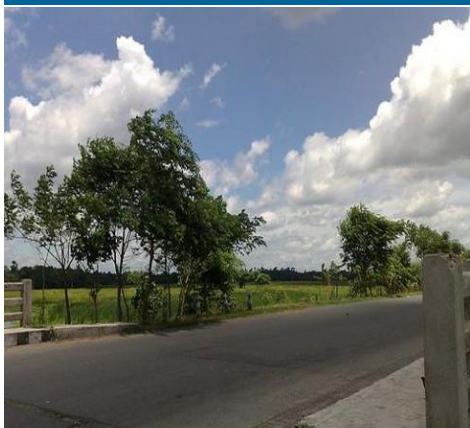


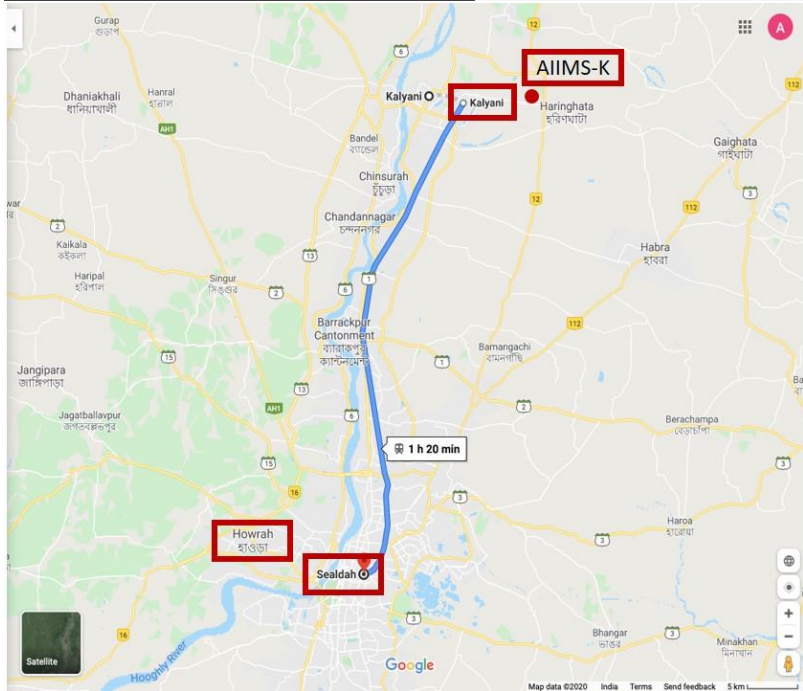
KALYANI

DISTRICT NADIA
WEST BENGAL
INDIA



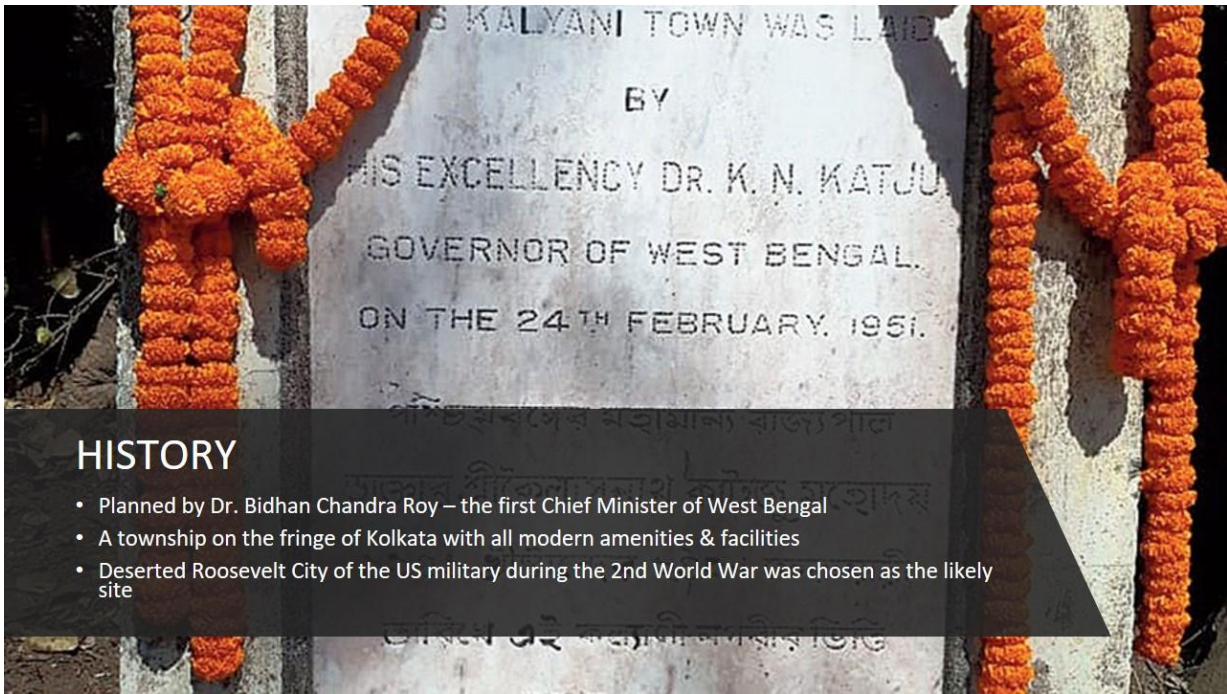
Map data ©2020 5 km

**HOW TO REACH
(via road)**



**HOW TO
REACH
(via train)**





HISTORY

- Planned by Dr. Bidhan Chandra Roy – the first Chief Minister of West Bengal
- A township on the fringe of Kolkata with all modern amenities & facilities
- Deserted Roosevelt City of the US military during the 2nd World War was chosen as the likely site



KALYANI - TOWN

- Well planned
- Maintained colonies
- Tree-clad roads
- Parks/playgrounds and markets in every block
- All utilities for a peaceful living



**KALYANI
MUNICIPALITY**



SP OFFICE



SDO OFFICE

ABLE ADMINISTRATION



PLACES FOR FUN & FROLIC

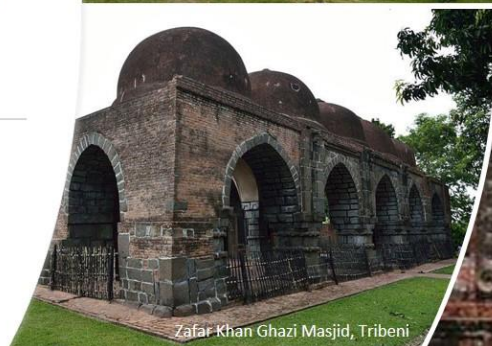
HISTORY CALLING



Hangseshwari Temple



Rathtala Temple

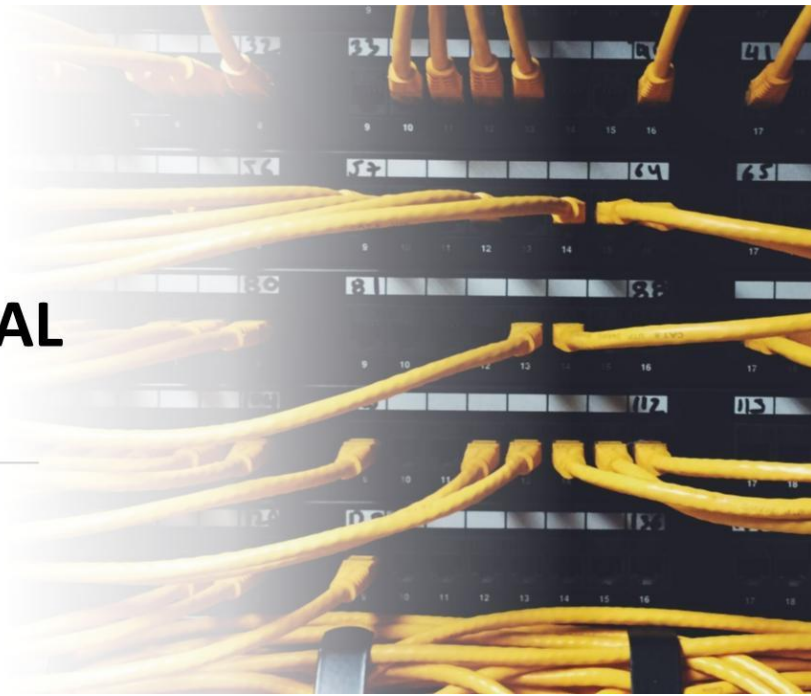


Zafar Khan Ghazi Masjid, Tribeni

OPEN OPPORTUNITIES FOR GAMES & SPORTS



AN EDUCATIONAL HUB



GOOD SCHOOLS



Bidhan Chandra Krishi Vishwavidyalaya



COLLEGES FOR HIGHER EDUCATION



NIBMG



National Institute Biomedical Genomics



CENTRAL INSTITUTE



National Dairy Research Institute



Indian Institute of Science Education & Research



AIIMS KALYANI
A DREAM TO BE.....